

A confirmatory cancer evaluation is recommended as the next step after a *Cancer Signal Detected* result is reported by OncoK9.

## Confirmatory Cancer Evaluation

May include any or all of the following:



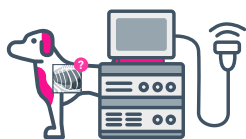
### EXAM

- Thorough clinical history
- Thorough physical exam
  - Including oral and rectal exam



### LABORATORY

- CBC and Chemistry
- Urinalysis



### IMAGING

- Thoracic radiographs – 3 views
- Abdominal imaging – ultrasound preferred
- Radiographs of localized areas of bone or joint pain, if present



### SAMPLING

- Tissue sampling of any detected masses or enlarged lymph nodes for pathological analysis

In some cases, advanced imaging (such as CT and/or MRI) may be indicated.